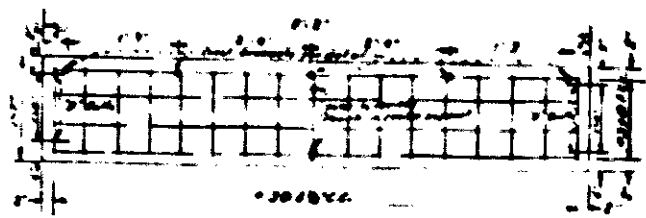
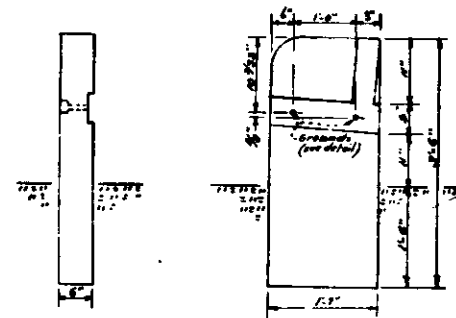


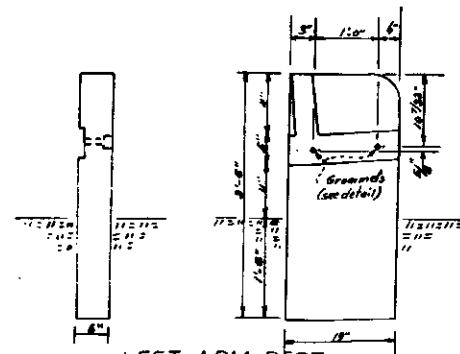
BACK



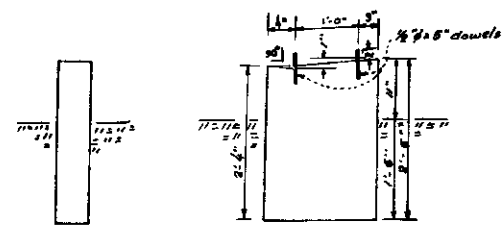
SEAT



RIGHT ARM REST

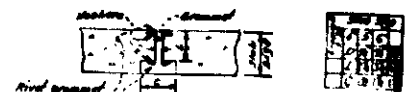


LEFT ARM REST



CENTER SUPPORT

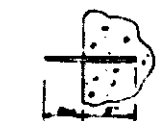
Note: Grommets and washers to be brass with a min thickness of 1/16\"/>



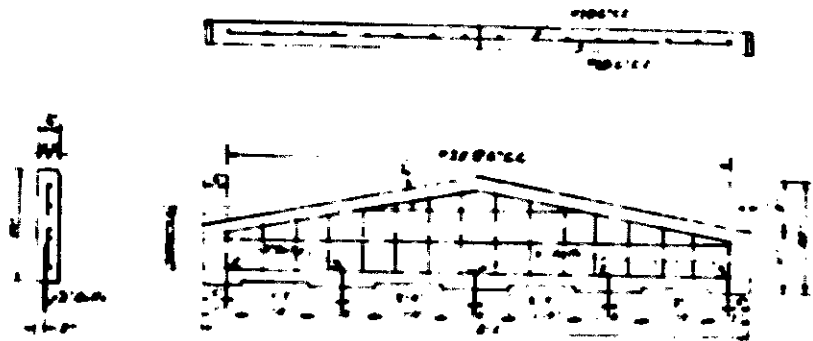
GROMMET DETAIL



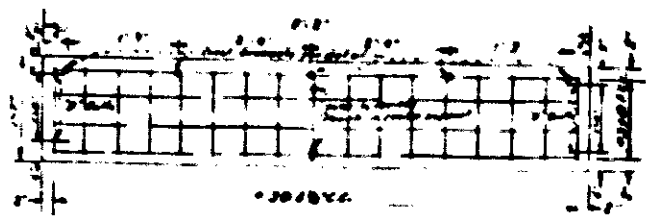
A-BOLT



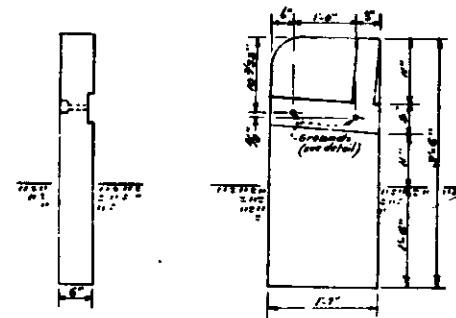
B-BOLT



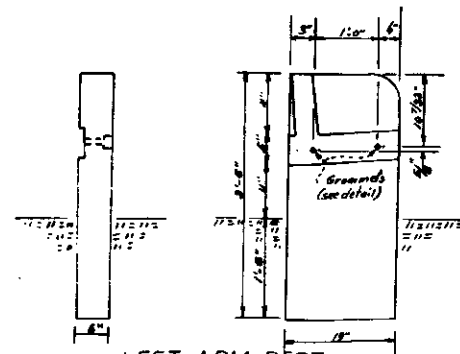
BACK



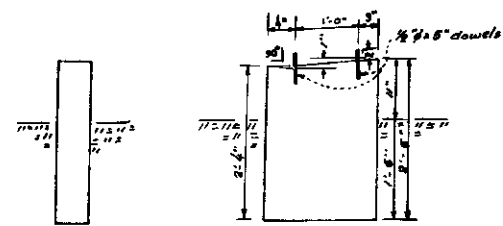
SEAT



RIGHT ARM REST

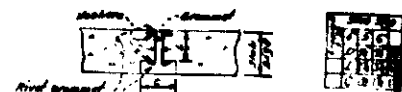


LEFT ARM REST

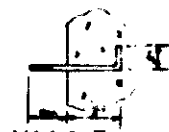


CENTER SUPPORT

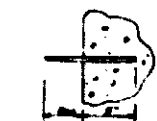
Note: Grommets and washers to be brass with a min thickness of 1/32\"/>



GROMMET DETAIL



A-BOLT



B-BOLT